



# PITLESS ADAPTERS; WELL SEALS AND CAPS



## SECTION 11



PRODUCT LINE	PAGE
ABS Well Seals .....	11.007
Cast Iron Well Seals	
Import, Submersible & Jet.....	11.008
Jets.....	11.010
Submersible .....	11.009 A-B
Drain & Wire Fitting - Bronze .....	11.004
Pitless Adapters	
Clear hole, Snap-on .....	11.003
No Lead Bronze .....	11.001
Stainless Steel .....	11.002
Well Caps	
Cast Aluminum .....	11.006
Cast Iron, Plastic .....	11.005
Well Seals & Accessories .....	11.011





# Pitless Adapters - No Lead Bronze



PT300NL



PT800NL



PT800TNL



PT825NL



PT100NL



PT125NL



PT3000NL



PT900NL



PT700NL & PT725NL

## Pitless Adapter Features:

Cast from **81% COPPER** content alloy **NO LEAD** bronze to insure long life and durability in the most aggressive well conditions. **Extended casing nipple** makes installation easy.

Rubber inner and outer casing gaskets for certified & approved water tight seal from ground water contamination.

- Built-in lowering eyelet for easier installation.
- All PT Series pitless adapters are individually boxed.
- All PT Series pitless adapters are 100% pressure tested.
- All PT Series pitless adapters are certified and approved watertight to PAS-97(2012) standards.
- **NO LEAD** cast bronze pitless adapters are third party certified to NSF/ANSI 372.



LISTED PAS-97 (2012)  
PITLESS ADAPTER STANDARD



Part Number	Slide Stop Style	Drop Pipe Size	Nominal Well Casing	Casing Hole Opening	Max Load Capacity (lbs.)	Ctn Qty
<b>NO LEAD Cast Bronze</b>						
PT300NL	Top Bar	1"	5" through 12"	1 3/4"	800	10
PT800NL	Top Bar	1"	5" through 12"	1 3/4"	900	10
PT100NL	U cup	1"	5" through 12"	1 3/4"	5,000	10
PT700NL	U cup	1"	5" through 12"	1 3/4"	5,000	10
PT825NL	Top Bar	1-1/4"	5" through 12"	2 1/4"	2,000	10
PT125NL	U cup	1 1/4"	5" through 12"	2 1/4"	5,000	10
PT725NL	U cup	1-1/4"	5" through 12"	2 1/8"	5,000	10
PT3000NL	U cup	2"	5 5/8" through 12"	3 1/8"	5,000	4
PT900NL	Top Bar	1" & 1 1/4" (2 Hole)	4" through 12"	1 3/4" & 2 1/4"	2,000	6
<b>TAPPED NO LEAD Cast Bronze for Underground tanks</b>						
PT800TNL	Top Bar	1"	5" through 12"	1 3/4"	900	10



**www.cbsupplies.ca**  
 Phone: (866) 503-5523 Fax: (888) 562-2095  
 AGI@cbsupplies.ca

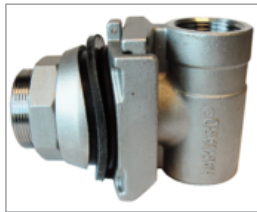




# Pitless Adapters - Stainless Steel



PT300SS



PT800SS



PT825SS



PT3000SS

## HARVARD Pitless Adapter Features:

- Cast from 304 cast stainless steel to insure long life and durability in the most aggressive well conditions.
- **Extended casing nipple** makes installation easy.
- Rubber inner and outer casing gaskets for certified & approved water tight seal from ground water contamination.
- Built-in lowering eyelet for easier installation.
- All PT Series pitless adapters are individually boxed.
- All PT Series pitless adapters are 100% pressure tested.
- **All PT Series pitless adapters are certified and approved watertight to PAS-97(2012) standards.**
- 304 Stainless Steel pitless adapters are Lead Free.
- **Third party certified to NSF/ANSI 372.**



Part Number	Drop Pipe Size	Nominal Well Casing	Casing Hole Opening	Max Load Capacity (lbs.)	Ctn Qty
<b>Cast 304 STAINLESS STEEL</b>					
PT300SS	1"	5" through 12"	1 3/4"	6,000	10
PT800SS	1"	5" through 12"	1 3/4"	6,000	10
PT825SS	1-1/4"	5" through 12"	2 1/4"	6,000	10
PT3000SS	2"	5" through 12"	3 1/8"	6,000	4





# Pitless Adapters - Clear hole, Snap-on



BA and BA-NL Series

### Features:

- CLEAR CASING DESIGN - no internal obstructions.
- Self -supporting (750 lbs / 300' of 1" iron pipe).
- 300 series stainless steel spring, pivot pin, pull cable, U-bolt, washers, nuts and extra wide backing strap.
- Built-in safety features should spring or cable fall.
- Available in combination with conduit or watertight caps.
- Quality American made bronze or No Lead Brass (NL).
- Easy to install.
- **All BA Series pitless adapters and BA-SC combination units are certified and approved watertight to PAS-97 Standards. ☺**



Part Number	Description	Nominal Well Size"	Casing O.D."	Drop Pipe"	Ctn Qty
BA4-100NL ☺	Pitless Adapter Only - NO LEAD	4	4 1/2	1	1
BA4-100PSCNL	With PSC4 Plastic Cap - NO LEAD	4	4 1/2	1	1
BA4-125NL ☺	Pitless Adapter Only - NO LEAD	4	4 1/2	1 1/4	1
BA4-125CNL	With C4 Alum Conduit Cap - NO LEAD	4	4 1/2	1 1/4	1
BA4-125PSCNL	With PSC4 Plastic Cap - NO LEAD	4	4 1/2	1 1/4	1
BA4-125SCNL ☺	With SC4 ABS/Alum Cap - NO LEAD	4	4 1/2	1 1/4	1
BA45-100NL ☺	Pitless Adapter Only - NO LEAD	4 1/2 SDR17	4.95	1	1
BA45-125NL ☺	Pitless Adapter Only - NO LEAD	4 1/2 SDR17	4.95	1 1/4	1
BA5-100NL ☺	Pitless Adapter Only - NO LEAD	5	5 9/16	1	1
BA5-125NL ☺	Pitless Adapter Only - NO LEAD	5	5 9/16	1 1/4	1



**www.cbsupplies.ca**  
 Phone: (866) 503-5523 Fax: (888) 562-2095  
 AGI@cbsupplies.ca





# Drain & Wire Fitting - Bronze



BWS75-100

## Bronze Drain and Wire Fitting Features:

- Cast from bronze to insure long life and durability in the most aggressive well conditions.
- Fastens to well casing to provide tapping for well drain, electrical conduit, bulkhead fittings & other related uses.
- Rubber gasket seals out ground water contamination.

Part Number	Drop Pipe Size	Nominal Well Casing	Casing Hole Opening	Max Load Capacity (lbs.)	Ctn Qty
BWS75-100	3/4" FPT x 1" MPT	5" through 8"	1 3/8"	—	10/60



# Well Caps - Cast Iron, Plastic



WC Series

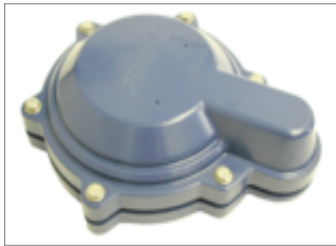
## HARVARD WC SERIES Cast Iron Watertight Well Cap

### Features:

- WC6 fits 6" and 6-1/4" I.D. 6 5/8" OD well casing.
- WC625 fits SDR27.6 6 1/4" ID PVC well casing, with 6.9" OD.
- 1" or 1 1/4" IPS conduit tap and factory installed screen vents.
- Heavy cast iron body. 20% heavier than any other comparable watertight well caps available.
- Wide rubber gasket provides positive watertight seal.
- Blue powder coat paint finish.
- Individually packaged. Includes all hardware.
- **All WC Series well caps are certified and approved watertight to PAS-97 (04) standards.**



LISTED PAS-97 (2012)  
PITLESS ADAPTER STANDARD



WTC6

## WTC6 Plastic Watertight Well Cap Features:

- Fits 6" ID, 6 1/4" ID, 6 5/8" OD well casing
- 1 1/4" IPS conduit tap.
- Hi-impact blue ABS plastic with UV inhibitors.
- Especially formulated for outdoor weatherability.
- Stainless steel bolts, washers and nuts are included.
- Factory installed screen vents.
- Made in USA. Patented



LISTED PAS-97 (2012)  
PITLESS ADAPTER STANDARD



PWTC6

PSC Series

## HARVARD Plastic Watertight Well Cap Features:

- PWTC6 Fits 6" and 6 1/4" ID, 6 5/8" OD well casing.
- PSC614 fits SDR27.6 6 1/4" ID PVC well casing with 6.9" OD.
- Gray, glass-filled thermoplastic with UV stabilizers.
- White ABS bottom casing seal for PSC Series.
- Especially formulated for outdoor weatherability.
- Stainless steel bolts, nuts included.
- Factory installed stainless steel vents. 1" conduit tap.
- Made in USA.



LISTED PAS-97 (2012)  
PITLESS ADAPTER STANDARD



C56V

## HARVARD C56V Cast Iron Multi-Size Well Cap Features :

- Heavy cast iron construction. 30% heavier than any other comparable cap available.
- Quick installation.
- Fits 5-5/8" and 6" well casing, Maximum 6 5/8" OD.
- 1" conduit opening.
- Blue finish for easy site location.
- Individually packaged. Includes bolts.



Part Number	Material	Nominal Well Casing	Maximum Casing OD	Conduit Tap	Master Ctn Qty
WC6	Cast Iron	6" and 6 1/4"	6 5/8"	1"	6
WC6-11/4	Cast Iron	6" and 6 1/4"	6 5/8"	1 1/4"	6
WC625	Cast Iron	6 1/4" SDR27.6 PVC	6.9"	1"	6
WC625-11/4	Cast Iron	6 1/4" SDR27.6 PVC	6.9"	1 1/4"	6
WTC6	ABS Plastic	6" and 6 1/4"	6 5/8"	1 1/4"	1
PWTC6	Thermoplastic	6" and 6 1/4"	6 5/8"	1"	8
PSC4	Thermoplastic	4"	4 1/2"	1"	12
PSC5	Thermoplastic	5"	5 9/16"	1"	12
PSC614	Thermoplastic	6 1/4" SDR27.6 PVC	6.9"	1"	12
C56V	Cast Iron	5-5/8", 6", 6 1/4"	6 5/8"	1"	6

Custom personalization of the caps above is available. Self adhering, engraved brushed aluminum. Minimum of 24 of one size. One time set-up charge of \$10.00. Allow 2-3 weeks for delivery.



**www.cbsupplies.ca**  
Phone: (866) 503-5523 Fax: (888) 562-2095  
AGI@cbsupplies.ca





# Well Caps - Cast Aluminum



AWTC Series



AWTC-T Series



SC Series



C Series

### AWTC-Series Watertight Vermin- Proof Cap Features:

- Cast aluminum for strength and weather resistance.
- All stainless bolts and ground screws.
- Molded 3/16" gasket.

### SC-Series Watertight Cap Features:

- For use on plastic casing only.
- Injection molded ABS & grade 319 aluminum, can be solvent welded directly to PVC well casing.
- Stainless steel nuts, bolts & screened vents.
- All SC Series well caps are certified and approved watertight to PAS-97 Standards.

### C-Series Standard Conduit Cap Features:

- For use on steel or plastic casing.
- Stainless steel set screws.

Custom personalization available - minimum of 48 of one size. Add "P" suffix. fo part number. One time set-up charge of \$20.00. Allow 2-3 weeks for delivery.



Part Number	Nominal Well Casing Size	Casing O.D.	Conduit Conn.	Vent Size	Weight	Ctn Qty
<b>Aluminum Watertight Vermin-Proof Well Cap</b>						
AWTC4	4"	4 1/2"	1"	1"	2.2	25
AWTC45 ☺	4 1/2"	5"	1"	1"	2.7	20
AWTC5	5"	5 9/16"	1"	1"	2.4	20
AWTC55 ☺	5 1/2"	6"	1"	1"	3.1	15
AWTC6	6"	6 5/8"	1 1/4"	1"	2.8	15
AWTC7 ☺	6 1/2"	7"	1 1/4"	1"	3.1	13
AWTC8	8"	8 5/8"	1 1/4"	1"	4.3	1
AWTC10	10"	10 3/4"	2"	1" (2)	9.0	1
AWTC12	12"	12 3/4"	2"	1" (2)	11.0	1
☺ Fits Whitewater pitless units						
<b>Aluminum Watertight Vermin-Proof Well Cap w/ 1-1/4" Top Tap for use w/ pellet chlorinators</b>						
AWTC45T ☺	4 1/2"	5"	1"	1"	2.7	20
AWTC55T ☺	5 1/2"	6"	1"	1"	3.1	15
AWTC6T	6"	6 5/8"	1 1/4"	1"	2.8	15
AWTC8T	8"	8 5/8"	1 1/4"	1"	4.3	1
☺ Fits Whitewater pitless units						
<b>Aluminum/ABS Combination Watertight Well Cap</b>						
SC4	4"	4 1/2"	1"		1.5	12
SC45	4 1/2"	4.95"	1"		1.7	15
SC5	5"	5 9/16"	1"		2.3	10
SC6	6"	6 5/8"	1"		2.5	8
SC614	6 1/4"(SDR27.6)	6.9"	1"		2.5	12
<b>Standard Ventilated Cap with Conduit Opening</b>						
C4	4"	4 1/2"	3/4"		1.6	25
C5	5"	5 9/16"	3/4"		2.0	15
C6	6"	6 5/8"	3/4"		2.3	15
C7	7"	7 5/8"	1"		2.9	15
C8	8"	8 5/8"	1"		3.4	1





PSWS

### PSWS and PJWS Series Features:

- Well seals are molded from high impact ABS for extra strength.
- Exclusive design of **extra thick (1-1/4") PVC gland** enables the sanitary sealing of a wide range of casing sizes.
- Zinc plated steel bolts.



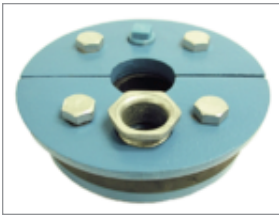
Part Number	Fits Well Casing ID	Well Casing ID Size Range	Drop Pipe Size	Conduit Tap IPS	Vent Tap IPS	Weight	Ctn Qty
<b>Single Hole</b>							
PSWS2x1	2"	2"	1"	--	--	.25 lbs	50
PSWS4xBLANK	4"	4 - 4 1/4"	blank	3/4"	3/8"	1.5 lbs.	10
PSWS4x1	4"	4 - 4 1/4"	1"	3/4"	1/2"	1.5 lbs.	10
PSWS4x11/4	4"	4 - 4 1/4"	1 1/4"	3/4"	1/2"	1.5 lbs.	10
PSWS4x11/2	4"	4 - 4 1/4"	1 1/2"	3/4"	1/2"	1.5 lbs.	10
PSWS4x2	4"	4 - 4 1/4"	2"	3/8"	1/4"	1.5 lbs.	10
PSWS41/2x1	4 1/2"	4 3/8 - 4 7/8"	1"	3/4"	1/2"	1.75 lbs.	10
PSWS41/2x11/4	4 1/2"	4 3/8 - 4 7/8"	1 1/4"	3/4"	1/2"	1.75 lbs.	10
PSWS5xBLANK	5"	4 7/8 - 5 1/4"	blank	3/4"	1/2"	2.0 lbs.	10
PSWS5x1	5"	4 7/8 - 5 1/4"	1"	3/4"	1/2"	2.0 lbs.	10
PSWS5x11/4	5"	4 7/8 - 5 1/4"	1 1/4"	3/4"	1/2"	2.0 lbs.	10
PSWS5x11/2	5"	4 7/8 - 5 1/4"	1 1/2"	3/4"	1/2"	2.0 lbs.	10
PSWS5x2	5"	4 7/8 - 5 1/4"	2"	3/4"	1/2"	2.0 lbs.	10
PSWS51/2xBLANK	5 1/2"	5 3/8 - 5 7/8"	blank	3/4"	1/2"	2.25 lbs.	10
PSWS51/2x1	5 1/2"	5 3/8 - 5 7/8"	1"	3/4"	1/2"	2.25 lbs.	10
PSWS51/2x11/4	5 1/2"	5 3/8 - 5 7/8"	1 1/4"	3/4"	1/2"	2.25 lbs.	10
PSWS51/2x11/2	5 1/2"	5 3/8 - 5 7/8"	1 1/2"	3/4"	1/2"	2.25 lbs.	10
PSWS6xBLANK	6"	5 7/8 - 6 1/4"	blank	3/4"	1/2"	3.0 lbs.	10
PSWS6x1	6"	5 7/8 - 6 1/4"	1"	3/4"	1/2"	3.0 lbs.	10
PSWS6x11/4	6"	5 7/8 - 6 1/4"	1 1/4"	3/4"	1/2"	3.0 lbs.	10
PSWS6x11/2	6"	5 7/8 - 6 1/4"	1 1/2"	3/4"	1/2"	3.0 lbs.	10
PSWS6x2	6"	5 7/8 - 6 1/4"	2"	3/4"	1/2"	3.0 lbs.	10
PSWS61/4xBLANK	6 1/4"	6 1/4 - 6 1/2"	blank	3/4"	1/2"	3.25 lbs.	10
PSWS61/4x1	6 1/4"	6 1/4 - 6 1/2"	1"	3/4"	1/2"	3.25 lbs.	10
PSWS61/4x11/4	6 1/4"	6 1/4 - 6 1/2"	1 1/4"	3/4"	1/2"	3.25 lbs.	10
PSWS61/4x11/2	6 1/4"	6 1/4 - 6 1/2"	1 1/2"	3/4"	1/2"	3.25 lbs.	10
PSWS61/4x2	6 1/4"	6 1/4 - 6 1/2"	2"	3/4"	1/2"	3.25 lbs.	10
PSWS8x1	8"	8 - 8 1/4"	1"	1"	1/2"	5.0 lbs.	6
PSWS8x11/4	8"	8 - 8 1/4"	1 1/4"	1"	1/2"	5.0 lbs.	6
PSWS8x2	8"	8 - 8 1/4"	2"	1"	1/2"	5.0 lbs.	6
<b>Double Hole</b>							
PJWS4x1x11/4	4"	4 - 4 1/4"	1x1 1/4"	n/a	1/2"	1.5 lbs.	10
PJWS5x1x11/4	5"	4 7/8 - 5 1/4"	1x1 1/4"	n/a	1/2"	2.0 lbs.	10
PJWS51/2x1x11/4	5 5/8"	5 3/8 - 5 7/8"	1x1 1/4"	n/a	1/2"	2.5 lbs	10
PJWS6x1x11/4	6"	5 7/8 - 6 1/4"	1x1 1/4"	n/a	1/2"	3.0 lbs.	10
PJWS61/4x1x11/4	6 1/4"	6 1/4 - 6 3/8"	1x1 1/4"	n/a	1/2"	3.25 lbs.	10



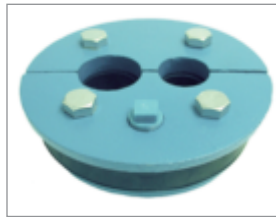




# Cast Iron Well Seals Import, Submersible & Jet



SWS Series



JWS Series

### Cast Iron Well Seal for Submersible & Jet Pumps Features:

- Highest quality smooth grey-iron castings accurately machined to narrowest tolerances.
- Finest heavy duty 3/4" molded rubber packing gland assures seal regardless of minor imperfections in well casing.
- Corrosion resistant, zinc plated steel bolts, rugged construction provides for maximum torque.
- Long lasting painted finish.
- Complete with electrical conduit kit and plug for SWS and plastic plugs for JWS series.
- Individually cartoned.
- Imported.



Part Number	Well Casing ID	Drop Pipe	Cable Hole Tapping	Vent Tapping	Ctn Qty
<b>Single Drop Pipe, SPLIT TOP, for submersible pumps (* Fits outside of well casing)</b>					
SWS2X1	2"	1"	-	1/8"	50
SWS2X11/4 *	2"	1 1/4"	-	1/8"	12
SWS3X1	3"	1"	3/8"	1/8"	16
SWS3X11/4	3"	1 1/4"	(2) 5/16" drilled	1/8"	16
SWS4X1	4"	1"	3/4"	1/2"	12
SWS4X11/4	4"	1 1/4"	3/4"	1/2"	12
SWS4X11/4S	4"	1 1/4" center	3/4"	1/4"	12
SWS4X11/2	4"	1 1/2"	3/4"	1/4"	12
SWS4X2	4"	2"	1/2"	1/4"	12
SWS4X2 SOLID	4"	2"	3/4"	1/2"	12
SWS41/4X1	4 1/4"	1"	3/4"	1/2"	12
SWS41/4X11/4	4 1/4"	1 1/4"	3/4"	1/2"	12
SWS5X1	5"	1"	1"	1/2"	6
SWS5X11/4	5"	1 1/4"	1"	1/2"	6
SWS5X2	5"	2"	3/4"	1/2"	6
SWS55/8X1	5 5/8"	1"	3/4"	1/2"	6
SWS6X1	6"	1"	1"	1/2"	6
SWS6X11/4	6"	1 1/4"	1"	1/2"	6
SWS6X11/2	6"	1 1/2"	1"	1/2"	6
SWS6X2	6"	2"	1"	1/2"	6
SWS6X3 SOLID	6"	3"	1"	1/2"	6
SWS6BLANK	6"	-	-	-	6
SWS61/4X1	6 1/4"	1"	1"	1/2"	6
SWS61/4X11/4	6 1/4"	1 1/4"	1"	1/2"	6
<b>Two Hole Drop Pipe, SPLIT TOP, for jet pumps</b>					
JWS3X1X3/4	3"	1" X 3/4"		1/8"	16
JWS4x11/4x1	4"	1 1/4" x 1"		1/2"	12
JWS5X11/4X1	5"	1 1/4" X 1"		1/2"	6
JWS55/8X11/4X1	5 5/8"	1 1/4" X 1"		1/2"	6
JWS6x11/4x1	6"	1 1/4" x 1"		1/2"	6
JWS61/4x11/4x1	6 1/4"	1 1/4" x 1"		1/2"	6



**www.cbsupplies.ca**  
 Phone: (866) 503-5523 Fax: (888) 562-2095  
 AGI@cbsupplies.ca





# Cast Iron Well Seals - Submersible



Part Number	Simmons Part No.	Well Casing ID	Drop Pipe	Cable Hole Tapping	Vent Tapping	Ctn Qty
<b>Single Drop Pipe, Split Top, for submersible pumps, continued</b>						
61/4x1SCH	141	6 1/4"	1"	1"	1/2"	6
61/4x11/4SCH	142	6 1/4"	1 1/4"	1"	1/2"	6
61/4x11/2SCH	143	6 1/4"	1 1/2"	1"	1/2"	6
61/4x2SCH	144	6 1/4"	2"	1"	1/2"	6
8x1SCH	196	8"	1"	1"	1/2"	1
8x11/4SCH	197	8"	1 1/4"	1"	1/2"	1
8x11/2SCH	198	8"	1 1/2"	1"	1/2"	1
8x2SCH	199	8"	2"	1"	1/2"	1
8x3SCH	041	8"	3"	1"	1/2"	1
8x4SCH	042	8"	4"	1"	1/2"	1
6 5/8", 10" and 12" well seals are available in steel only by special order.						
<b>Single drop pipe, SOLID TOP PLATE, for submersible pump</b>						
440B	301	4"	1"	3/4"	1/2"	6
440C	049	4"	1-1/4"	3/4"	1/2"	6
450B	323	5"	1"	3/4"	1/2"	6
460B	313	6"	1"	1"	1/2"	6
460C	314	6"	1-1/4"	1"	1/2"	6
460D	315	6"	1-1/2"	1"	1/2"	6
460E	316	6"	2"	1"	1/2"	6
6x3SCH	021	6"	3" offset	1"	1/2"	6
460X	313A	6"	Blank	1"	1/2"	6
462B	318	6-1/4"	1"	1"	1/2"	6
462C	319	6-1/4"	1-1/4"	1"	1/2"	6
462D	320	6-1/4"	1-1/2"	1"	1/2"	6
462E	321	6-1/4"	2"	1"	1/2"	6

• Additional drop pipe sizes and well casing ID's of well seals are available by special order. Allow 3 weeks for delivery.



**www.cbsupplies.ca**  
 Phone: (866) 503-5523 Fax: (888) 562-2095  
 AGI@cbsupplies.ca





# Cast Iron Well Seals - Jet



## Cast Iron Well Seal for Jet Pump Features:

- Highest quality smooth grey-iron castings accurately machined to narrowest tolerances.
- Finest heavy duty 3/4" molded rubber packing gland assures seal regardless of minor imperfections in well casing.
- Corrosion resistant, zinc plated steel bolts, rugged construction provides for maximum torque.
- Long lasting painted finish.
- Individually cartoned.



Part Number	Simmons Part No.	Well Casing ID	Drop Pipe	Vent Tapping	Ctn Qty
<b>Two Hole Drop Pipe, SPLIT TOP, for jet pumps</b>					
3x1x3/4DH	149	3"	1x 3/4"	1/8"	6
4x11/4x1DH	152	4"	1 1/4 x 1"	1/2"	6
4x11/4x11/4DH	153	4"	1 1/4 x 1 1/4"	1/2"	6
41/4x11/4x1DH	156	4 1/4"	1 1/4 x 1"	1/2"	6
5X11/4x1DH	161	5"	1 1/4 x 1"	1/2"	6
55/8x11/4x1DH	171	5 5/8"	1 1/4 x 1"	1/2"	6
55/8x11/4x11/4DH	172	5 5/8"	1 1/4 x 1 1/4"	1/2"	6
6x11/4x1DH	177	6"	1 1/4 x 1"	1/2"	6
6x11/4x11/4DH	178	6"	1 1/4 x 1 1/4"	1/2"	6
61/4x11/4x1DH	183	6 1/4"	1 1/4 x 1"	1/2"	6
61/4x11/4x11/4DH	184	6 1/4"	1 1/4 x 1 1/4"	1/2"	6

• Additional drop pipe sizes for jet well seals are available by special order. Allow 3 weeks for delivery.



**www.cbsupplies.ca**  
 Phone: (866) 503-5523 Fax: (888) 562-2095  
 AGI@cbsupplies.ca





# Well Seals & Accessories



**CLAYTON MARK®**



8662B

### Clayton Mark No. 359 Well Seal Features:

- Designed to seal well when insufficient room exists between casing and drop pipe.

### Simple 3 Step Installation:

1. Place eye bolt clamp on outside of casing.
2. Slip rubber packer cover plate over drop pipe.
3. Tighten eye bolts to compress rubber seal in casing.



Part Number	Inside Diameter	Drop Pipe	Vent Size	Ctn Qty
<b>No. 359 Well Seals</b>				
8662B	2"	1-1/4"	1/8 N.P.S.	16



Vent Pipe



Vent Seal

### Vent Pipe Features:

- Fabricated from 1/2" heavy duty zinc plated steel pipe.
- Includes stainless steel bug screen.
- Use for ventilating wells directly to atmosphere.

### Vent Seal Features:

- Fabricated from rugged ABS for sanitary protection.
- 1/2" OD x 4-1/2" long, and is easily installed.



Part Number	Description	Ctn Qty
<b>Vent Pipe</b>		
VP50	1/2" Zinc Plated Steel	30
<b>Vent Seal</b>		
VS50	1/2" Plastic	50



**www.cbsupplies.ca**  
 Phone: (866) 503-5523 Fax: (888) 562-2095  
 AGI@cbsupplies.ca



11.011